

Resin based Dental Restorative Material

ESTELITE POSTERIOR

QUICK-CURE

ESTELITE POSTERIOR, developed for optimal posterior restorations allows you to place dependable restorations with ideal handling, reliable physical strength and quick curing properties (10 seconds). By implementing Tokuyama's patented innovative initiator system "Radical Amplified Photopolymerization (RAP) Technology" **ESTELITE POSTERIOR** offers the clinician a reduced curing time without sacrificing working time.



Benefits

**Designed for
Optimal Posterior Restorations.**

- Ideal handling
 - Optimal stiffness, easy to shape, non-sticky
- Prominent physical strength
 - High flexural and compressive strength
- Exclusive posterior shade availability
 - PA1, PA2, PA3, PCE (Clear Enamel)
- Quick curing time
 - 10 seconds with a halogen light ($\geq 400\text{mW/cm}^2$)
- Ample working time
 - 50 seconds under an ambient light (10,000 lx)

Indications

- Direct posterior restorations (including the occlusal surface)
- Repair of porcelain/composite

Before



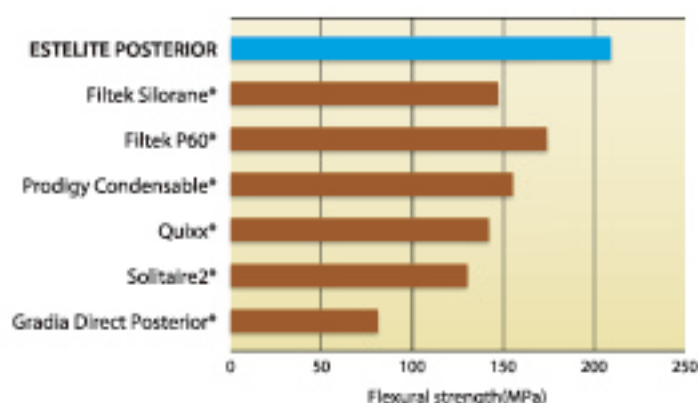
After



Case courtesy of Kazunori Otani, DDS

Excellent Physical Properties

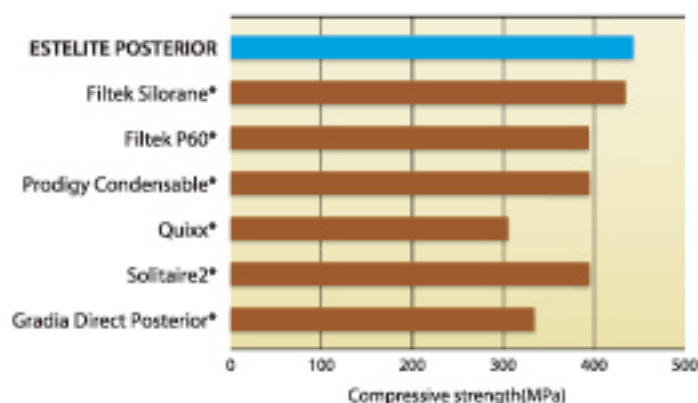
Flexural Strength**



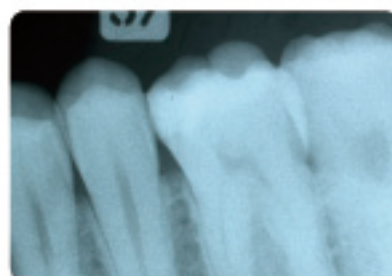
Flexural Strength**	209 MPa
Compressive Strength**	443 MPa

Irradiation Time for polymerization (refer to instructions)	Halogen 800mW/cm ²	5-10 sec.
	Plasma 950mW/cm ²	3 sec.
	LED 900mW/cm ²	5-10 sec.

Compressive Strength**



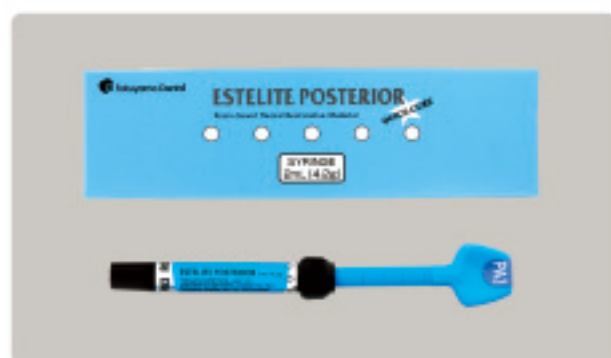
Excellent (290% Al) Radiopacity



** Source: Tokuyama Dental R&D

* Not a registered trademark of Tokuyama Dental Corporation.

Packaging Availability



ESTELITE POSTERIOR Refills in Syringe only

ESTELITE POSTERIOR Syringe Refill

Contents: 1 syringe (4.2g)

Available shades: PA1, PA2, PA3, *PCE

*PCE (Clear Enamel) is designed for the top surface of posterior restorations.



Specifications are subject to change without obligation on the part of the Manufacturer

Manufactured by
Tokuyama Dental Corporation

38-8, Taitou 1-chome, Taitou-ku, Tokyo, Japan
TEL: +81-3-3835-2261 FAX: +81-3-3835-7224
Email: export@tokuyama-dental.co.jp
URL: www.tokuyama-dental.com