

Chairside Hard Denture Relines and Border Extensions

TOKUYAMA REBASE II

Accurate Fit with
In-office Convenience



TOKUYAMA REBASE II



FAST



NORMAL



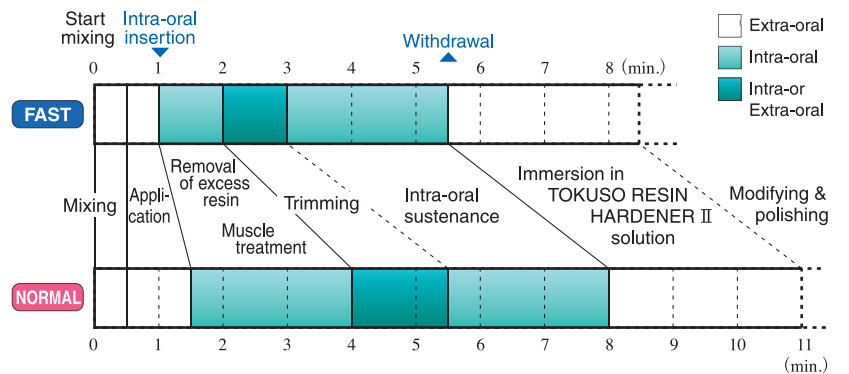
CONTENTS

| | |
|--|---|
| TOKUYAMA REBASE II POWDER (80g) | 1 |
| TOKUYAMA REBASE II LIQUID (50ml) | 1 |
| ADHESIVE (15ml) | 1 |
| Measuring Cup (for TOKUYAMA REBASE II POWDER) | 1 |
| Dropper (for TOKUYAMA REBASE II LIQUID) | 1 |
| Rubber Cup (for mixing TOKUYAMA REBASE II POWDER and LIQUID) | 1 |
| Spatula (for spreading TOKUYAMA REBASE II on the denture) | 1 |
| Plastic Cup (for ADHESIVE) | 2 |
| Brush (for ADHESIVE) | 2 |
| TOKUSO RESIN HARDENER II | 1 |
| Spoon (for TOKUSO RESIN HARDENER II) | 1 |

FEATURES

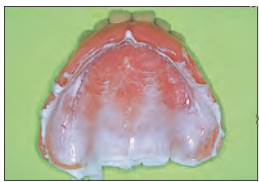
- One-appointment procedure
- Saving lab costs & time
- In-mouth curing
- Reduced heat & chemical irritation
- Excellent fit
- Adequate working time
- Easy polishing

PROCEDURE TIME



* Treatment time varies according to room temperature and powder-liquid ratio.

BASIC PROCEDURE



① Checking the adaptation



② Removal of the denture surface



③ Application of ADHESIVE



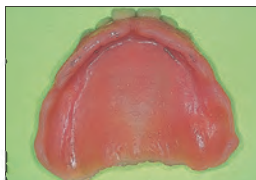
④ Application of the resin



⑤ Insertion of the denture → Removal of excess resin



⑥ Muscle treatment



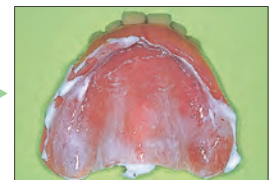
⑦ Withdrawal



⑧ Immersion in RESIN HARDENER II solution



⑨ Modifying and polishing



⑩ Checking the adaptation

Specifications are subject to change without notice and without obligation on the part of the Manufacturer.

Manufacturer
Tokuyama Dental Corporation

38-9, Taitou 1-chome, Taitou-ku, Tokyo 110-0016, Japan
TEL: +81-3-3835-2261 FAX: +81-3-3835-7224