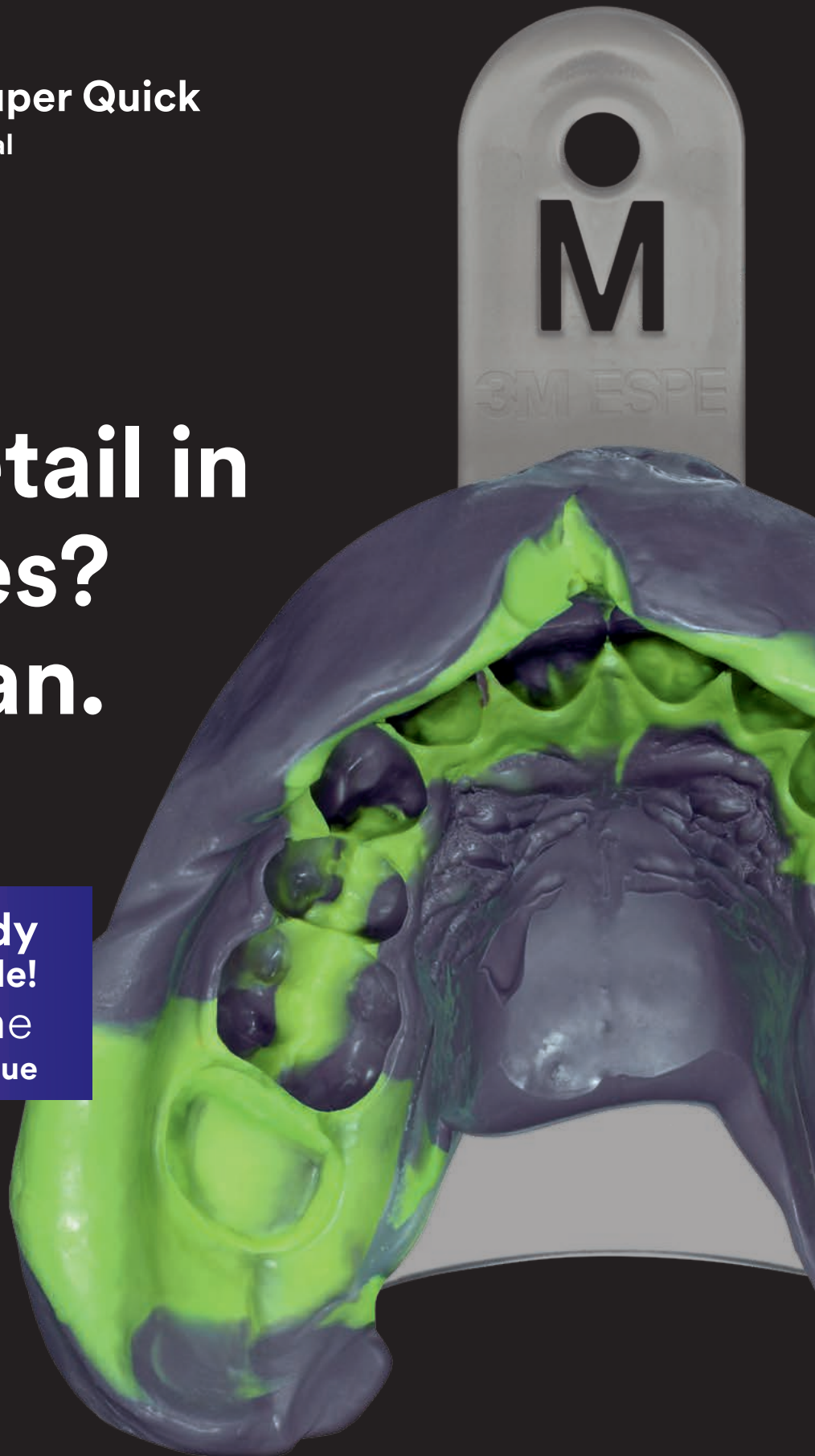


3M Science.
Applied to Life.™

3M™ Impregum™ Super Quick
Polyether Impression Material

**Capture
every detail in
2 minutes?
Yes, it can.**

**Heavy Body
now available!
Best for the
1-step technique**



The fastest way to poly precision for smaller ca 3M™ Impregum™ Supe

Impregum Polyether Impression Material has always been the trusted solution for complex situations and implants. So wouldn't it be great if you could get that same outstanding impression accuracy and detail reproduction even in single-unit cases? To ensure that the highest demands are fulfilled without limiting productivity, we created new Impregum Super Quick Polyether Impression Material.

With its brand-new formulation, Impregum Super Quick Material combines the outstanding performance and reliability of a polyether with the speed of a VPS. Deep margins and moist environments will no longer slow you down.



Quicker set.

So fast, so good: With just a two-minute setting time, the new Impregum Super Quick Material allows for faster impressions in less complex cases like single-unit crowns, implants, inlays/onlays and smaller bridges up to 3 units.



100% Polyether. Trusted precision.

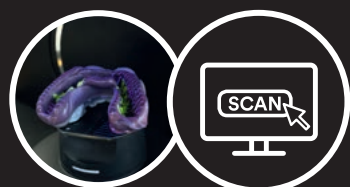
Like all polyethers, Impregum Super Quick Materials demonstrate excellent performance in moist situations and great flow behavior. Both lead to a high level of accuracy and detail reproduction for high-precision restorations.

It is especially important that you get the full working time for your impression material. Because it is a polyether, you get the full 45 seconds of working time with Impregum Super Quick Material. You are able to avoid the inaccuracies associated with premature setting experienced with VPS materials.



Make your patients feel comfortable.

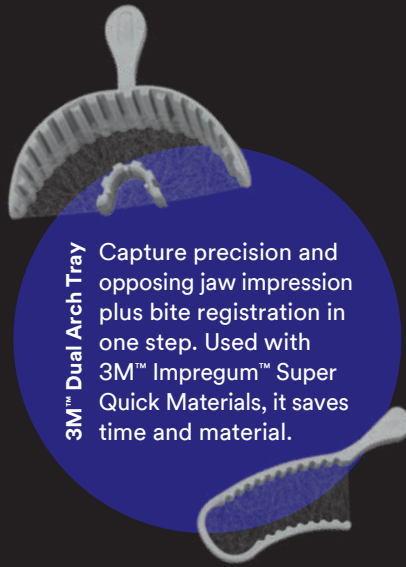
An improved fresh, minty taste, together with a short time in the mouth, significantly increases your patients' comfort.



Polyether meets CAD/CAM workflow.

Impregum Super Quick Material is scannable with the current generation of scanners for more efficient cooperation with your lab.

ether ses. r Quick.



3M™ Dual Arch Tray Capture precision and opposing jaw impression plus bite registration in one step. Used with 3M™ Impregum™ Super Quick Materials, it saves time and material.



Fast, gentle moisture management and retraction of gingival tissue with 3M™ Astringent Retraction Paste.

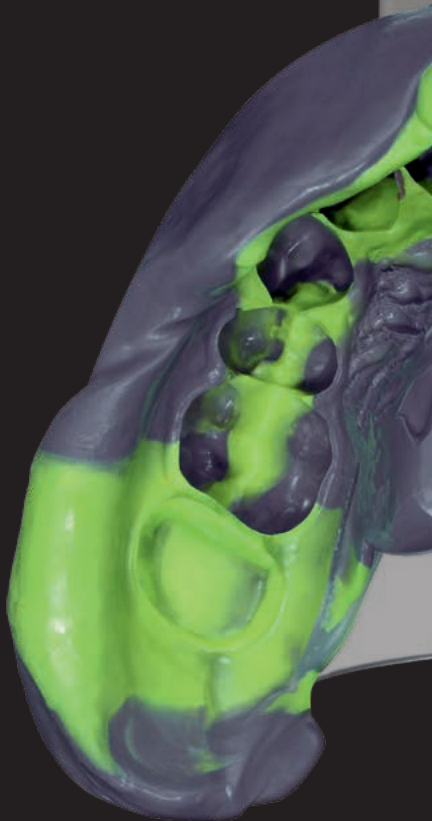


Convenient, highly accurate application of 3M™ Impregum™ Super Quick Light Body Polyether Impression Material using 3M™ Intra-oral Syringe – Purple.



Precise, void-free details plus contrasting colours for excellent readability.

High-precision 1-step impression made with 3M™ Impregum™ Super Quick Polyether Impression Material (Heavy and Light Body) and single-use 3M™ Impression Tray.



HIGHLY SATISFIED

A clinical evaluation shows a **very high satisfaction rate** of almost **95%** regarding the **precision** of 3M™ Impregum™ Super Quick Material impressions and the **fit of the final restorations**.



Source: 3M field evaluation with 447 participants from Europe and the U.S., 2017.

3M™ Impregum™ Super Quick

- First superfast polyether with 45-sec. working time and quick 2-minute setting
- Available in heavy, medium and light body consistencies
- For monophasic and 1-step impression techniques
- Perfect for impressions for single-unit crowns, implants, inlays/onlays and smaller bridges up to 3 units





Dispensing system
Impression technique
Single-unit crown
Small implant (≤ 2 units)
Inlay/onlay (≤ 2 units)
Small bridge (≤ 3 units)
Recommended max. working time (min:sec)
Intra-oral setting time at 37°C (min:sec)

3M™ Impregum™ Penta™ Super Quick (Medium Body)		Monophase or 1-step	✓	✓	✓	✓	0:45	2:00
3M™ Impregum™ Penta™ Super Quick (Heavy Body)		1-step	✓	✓	✓	✓	0:45	2:00
3M™ Impregum™ Super Quick (Light Body)		1-step	✓	✓	✓	✓	0:45	2:00

Ordering information



3M™ Impregum™ Penta™ Super Quick Medium Body Introductory Kit (69383)



3M™ Impregum™ Penta™ Super Quick Medium Body/Light Body Introductory Kit (69381)



3M™ Impregum™ Penta™ Super Quick Heavy Body/Light Body Introductory Kit (69413)

Item no. Product information

NEW

Introductory Kits for 3M™ Pentamix™ 3 Automatic Mixing Unit

69383	3M™ Impregum™ Penta™ Super Quick Medium Body 1 base paste MB – 300 ml, 1 catalyst MB – 60 ml, 1 3M™ Penta™ Cartridge MB, 10 3M™ Penta™ Mixing Tips – Red, 1 3M™ Penta™ Elastomer Syringe, 1 Polyether Tray Adhesive – 17 ml, 3 3M™ Astringent Retraction Paste capsules
69381	3M™ Impregum™ Penta™ Super Quick Medium Body/Light Body 1 base paste MB – 300 ml, 1 catalyst MB – 60 ml, 2 cartridges LB – 50 ml each, 1 3M™ Penta™ Cartridge MB, 10 3M™ Penta™ Mixing Tips – Red, 5 3M™ Intra-oral Syringes Purple, 5 3M™ Garant™ Mixing Tips purple, 5 3M™ Garant™ Intra-oral Tips white, 1 Polyether Tray Adhesive – 17 ml, 3 3M™ Astringent Retraction Paste capsules, 6 3M™ Impression Trays
69413	3M™ Impregum™ Penta™ Super Quick Heavy Body/Light Body 1 base paste HB – 300 ml, 1 catalyst HB – 60 ml, 2 3M™ Impregum™ Super Quick LB cartridges – 50 ml each, 1 3M™ Impregum™ Penta™ HB Cartridge for 3M™ Pentamix™ 3 Automatic Mixing Unit, 10 3M™ Penta™ Mixing Tips – Red, 5 3M™ Intra-oral Syringes Purple, 5 3M™ Garant™ Mixing Tips purple, 5 3M™ Garant™ Intra-oral Tips white, 1 3M™ Polyether Tray Adhesive – 17 ml, 3 3M™ Astringent Retraction Paste capsules, 6 3M™ Impression Trays

NEW

Refills

69385	3M™ Impregum™ Penta™ Super Quick Medium Body 2 base pastes – 300 ml each, 2 catalysts – 60 ml each
69406	3M™ Impregum™ Penta™ Super Quick Heavy Body 2 base pastes HB – 300 ml each, 2 catalysts HB – 60 ml each
69379	3M™ Impregum™ Super Quick Light Body 4 cartridges – 50 ml each, 5 3M™ Intra-oral Syringes Purple, 5 3M™ Garant™ Mixing Tips purple

Mixing Devices & Accessories

77871	3M™ Pentamix™ 3 Automatic Mixing Unit
77903	3M™ Pentamix™ Lite Automatic Mixing Unit – 230 V 50 Hz INT incl. 1 3M™ Penta™ Cartridge
77906	3M™ Pentamix™ Lite Automatic Mixing Unit – 230 V 50 Hz CH incl. 1 3M™ Penta™ Cartridge
69387	3M™ Impregum™ Penta™ Super Quick Medium Body Cartridge
69401	3M™ Impregum™ Penta™ Super Quick Heavy Body Cartridge
77944	1 3M™ Penta™ Cartridge for 3M™ Pentamix™ Lite Mixing Unit
71507	3M™ Intra-oral Syringes Purple, 20 pieces
71508	3M™ Intra-oral Syringes Purple, 50 pieces
77580	1 cartridge dispenser 1:1/2:1
77601	Wall mount kit 3M™ Pentamix™ 3 Mixing Unit
71622	48 3M™ Dual Arch Impression Trays posterior
71623	35 3M™ Dual Arch Impression Trays anterior
30600	1 Polyether Tray Adhesive – 17 ml
77949	3M™ Penta™ Mixing Tips – Red, 50 pieces
71454	3M™ Garant™ Mixing Tips purple, 50 pieces
71461N	3M™ Garant™ Intra-oral Tips white, 50 pieces



3M Oral Care
2510 Conway Avenue
St. Paul, MN 55144-1000
USA
1-800-634-2249

3M Canada
Post Office Box 5757
London, Ontario N6A 4T1
Canada
1-888-363-3685

3M.com/Dental

3M, Garant, Impregum, Penta and Pentamix are trademarks of 3M Company or 3M Deutschland GmbH. Used under license in Canada. All other trademarks are owned by other companies.

© 3M 2018. All rights reserved.