

## Replacement of a composite restoration: Monophase impression using 3M™ Impregum™ Penta™ Super Quick Polyether Impression Material

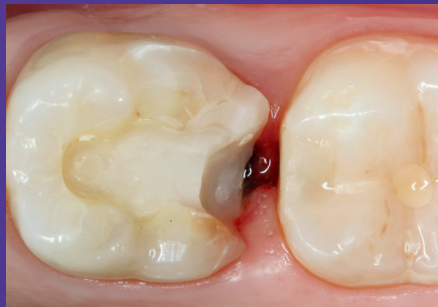
Clinical dentistry and photography by: Dr. Gunnar Reich, Munich, Germany  
Lab work by: MDT Nicole Freund, Tutzing, Germany

### About the Case:

A patient needed a replacement of a fractured composite on the first lower molar. Impression was made with 3M™ Impregum™ Penta™ Super Quick Medium Body Polyether Impression Material in the monophase technique.



Initial situation: Fractured old composite restoration of first lower molar.



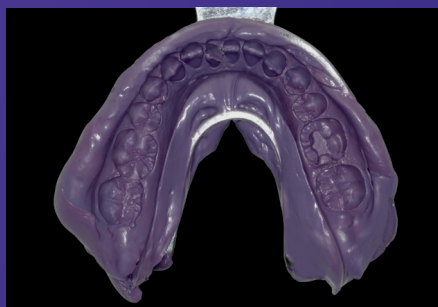
Deep distal preparation with bleeding from inflamed gingival tissue.



Challenging moisture control and bleeding managed by using soaked retraction cord.



Impression was taken with the monophase technique. Syringing of 3M™ Impregum™ Penta™ Super Quick Polyether Impression Material (Medium Body) around preparation with the 3M™ Penta™ Elastomer Syringe.



Final monophase precision impression made of 3M™ Impregum™ Penta™ Super Quick Polyether Impression Material (Medium Body).



Final situation: 3M™ Lava™ Esthetic Fluorescent Full-Contour Zirconia restoration cemented with 3M™ RelyX™ Unicem™ 2 Self-Adhesive Resin Cement.